

# SPECTRA B300STF

Xenon Strobe Flashing Dual Frequency

Beacon

5J (Ws) @ 1.0 Hz OR 5J @ 2.0 Hz

Selected remotely

IP Rating: IP65

Temp: - 25°C to +50°C

Unit weight: 325g DC : 300g AC  
CE

Dimensions : Ø100 x 150mm

1.5m<sup>2</sup> terminals

Cable entry: 1 x 5-7mm push through  
grommet

1 x M20 cable entry (IP65)

x = Lens colour

R = Red

B = Blue

G = Green

A = Amber

C = Clear

Y = Yellow

Voltage

Order code  
B300STF012B/x 12V AC/DC 600mA/500mA  
B300STF024B/x 24V AC/DC 300mA/250mA  
B300STF048B/x 48V AC/DC 250mA/175mA

Mountings

B300RAB001 Right angle bracket  
B300TMA001 Tube mounting assembly

Tel : +44 (0)2 8743 8880 Fax : +44 (0)20 8740 4200


email : sales@e2s.com web : www.e2s.com



 **ATTENTION:** Installation must be carried out by an electrician in compliance with the latest codes and regulations.

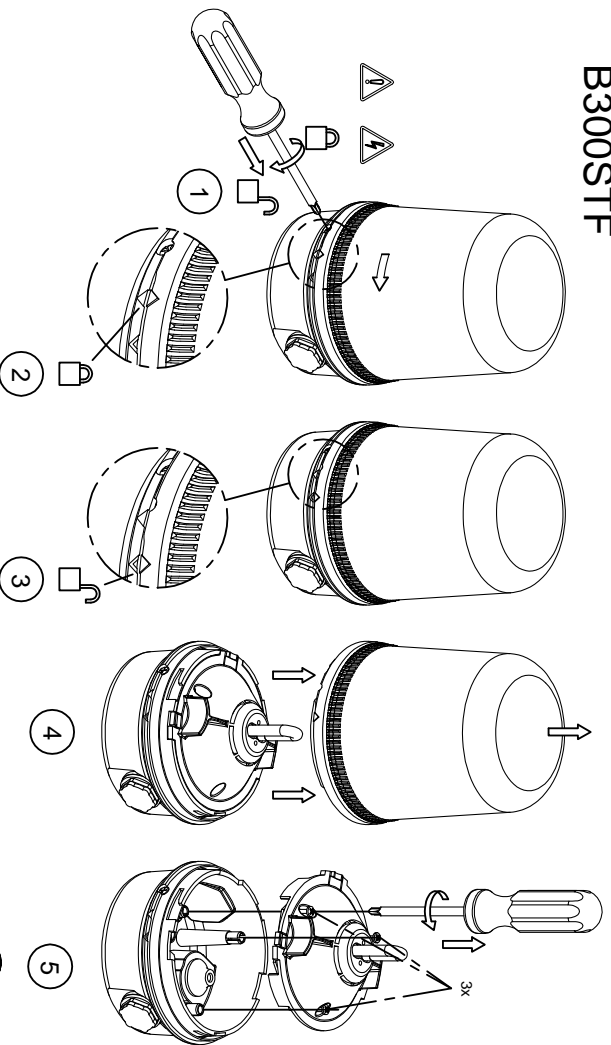
 **ATTENTION:** Disconnect from power source before installation or service to prevent electric shock.

 **ATTENTION:** On strobe beacons allow a minimum of 2 minutes for hazardous high voltage to discharge from unit.

 **ATTENTION:** Lens on unit will be hot allow to cool prior to removal.



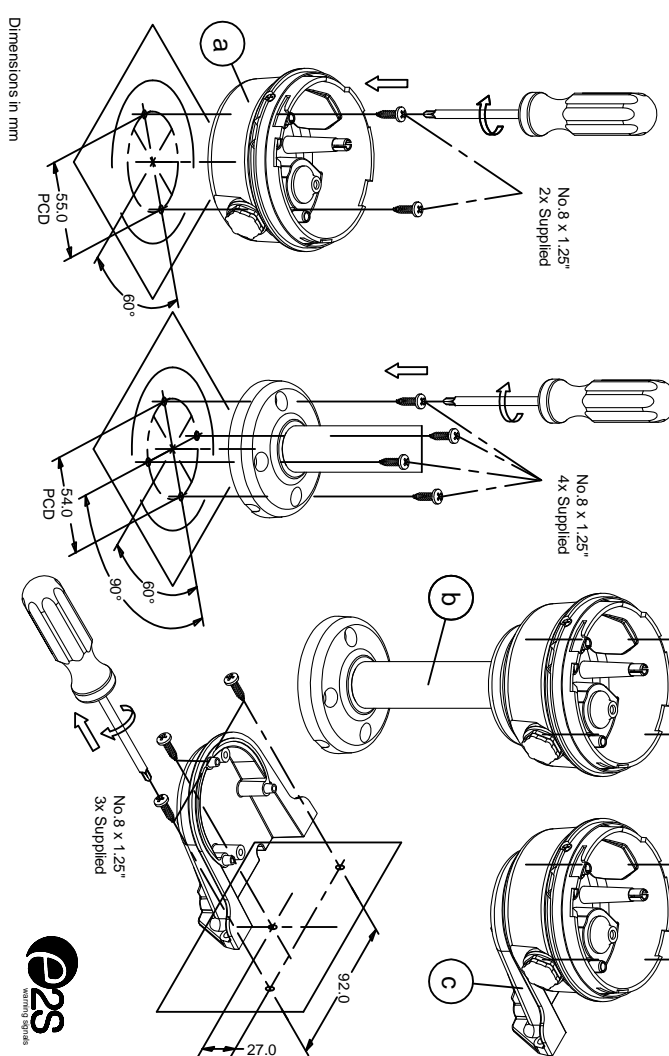
# A SPECIIRA B300STF



MOUNTING OPTIONS	
a	STANDARD BASE
b	POLE MOUNT
c	90° BRACKET

No. 8 x 0,5" 2x Supplied with item b  
No. 8 x 0,5" 2x Supplied with item c

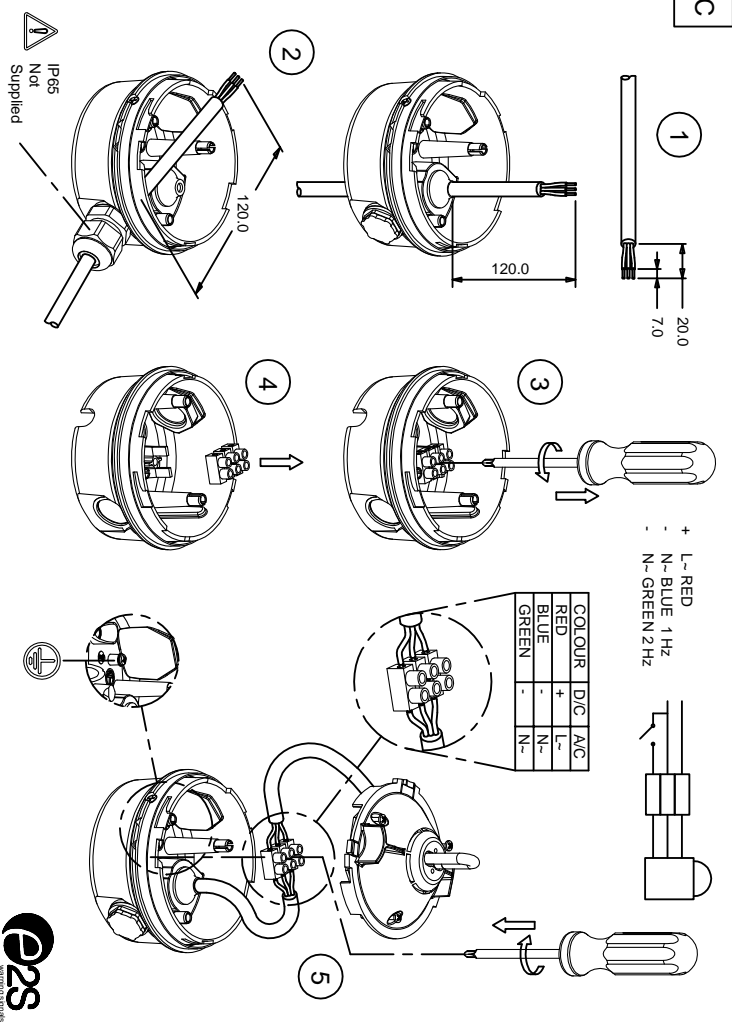
Tel : +44(0)20 8743 8880 Fax : +44(0)20 8740 4200  
 Mail : sales@e2s.com Web : www.e2s.com



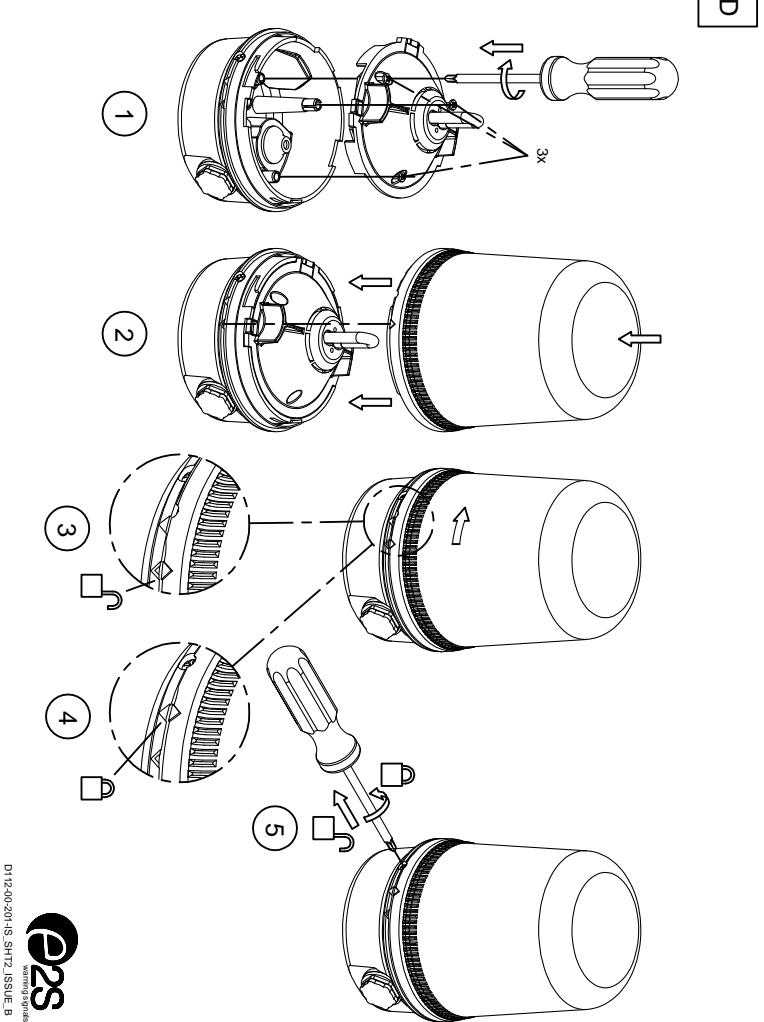
Dimensions in mm



## C



## D



017430-301-15-SHTZ-JSSUE\_B